

TECHNICAL SPECIFICATIONS

UC1240

12V Series
40-80A DC Charger

80A Total (AC Input with 40A DC O/P
Alternator / PV Input with 40A DC O/P)

NEW



Product features

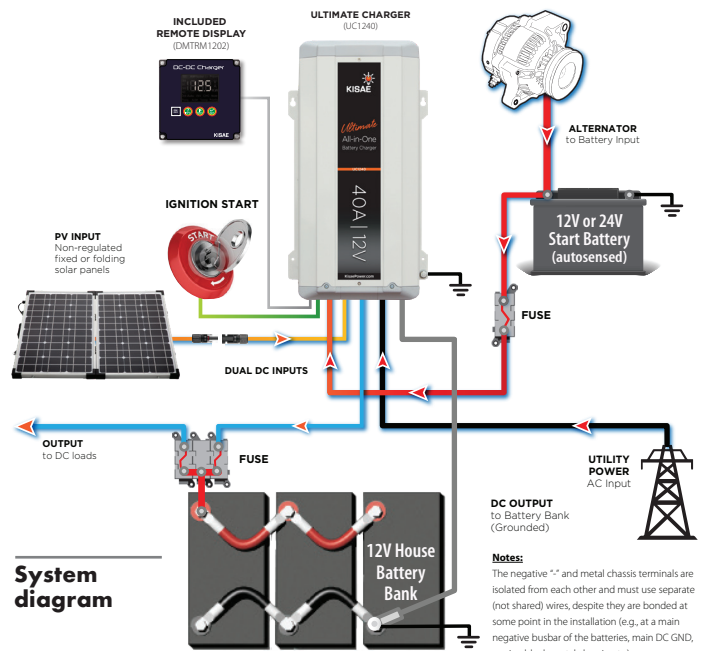
- AC input and MPPT Solar input or Alternator input.
- Multi-stage charging ensures batteries are charged to battery manufacturer's recommendations.
- Microprocessor controlled charging algorithm (Bulk, Absorption, Float) for Gel, Flooded, AGM and Lithium batteries
- Solar Input to trickle charge Alternator Input battery.
- MPPT solar regulator provides maximum power from solar panels to battery.

Product dimensions

Length: 17.9", Width: 9.4", Height: 4.1" (455mm x 238mm x 104mm)
Weight: 7.6 lbs. (3.45 Kg)

Specifications subject to change without notice.

kisaepower.com



System diagram

Terminal connection



Disclaimer: KISAE has provided this drawing as a guide only. Installers using it must ensure the system is installed to meet local code requirements. Please refer to the Owner's Manual for proper fuse protection and wire sizing.

UC1240

12V Series
40 - 80A Charger

80A Total (AC Input with 40A DC O/P
Alternator / PV Input with 40A DC O/P)

NEW

DC Controller Output

| | |
|--------------------------|--|
| Output Current (Maximum) | 80A Total (40A max from AC Input and 40A Max from Solar or Alternator Input) |
| Output Voltage Range: | |
| Charge | 13.5 - 15.5V |
| Float | 13.0 - 13.8V |
| Equalize (Flooded only) | 15.5V |
| Charging Control | 5 Stages (Test/Bulk/Absorption/Float/Recharge) |
| DC Output Bank | One |
| Selectable Battery Type | Gel, Flooded (with Equalization.), AGM, Lithium, Program |
| Parasitic Current | < 2 mA |
| Efficiency | > 90% |

DC Input (Battery/Alternator)

| | |
|----------------------------|--|
| DC Input Range | 10.5 - 32Vdc |
| DC Input Nominal Operation | 13.2V for 12V input charging system 26.4V for 24V input charging system |
| Engine Start Control: ON | DC input from Battery/Alternator |
| Engine Start Control: OFF | DC Input from PV input (if applicable) |
| Input Current | 50A max |

DC Input (PV)

| | |
|------------------------------|--|
| Max. PV Open Circuit Voltage | 50 Vdc |
| DC Input Nominal Operation: | 17.5Vdc for 12V PV panels connected in parallel 35Vdc for 12V PV panels connected in series |
| MPPT Tracking Efficiency | > 98% |

AC Input (Utility/AC Generator)

| | |
|----------------------------|----------------------------|
| AC Input Voltage (Nominal) | 100, 120, 220, 230, 240VAC |
| AC Input Operating Range | 90 - 265VAC |
| AC Input Frequency Range | 47 - 63Hz |

DC Output Protection and Features

| | |
|---------------------------------|---|
| Reverse Battery | Yes (shutdown), Auto Reset |
| DC Output Short Circuit | Yes (shutdown), Auto Reset |
| Over Charge | Yes (shutdown), Auto Reset |
| Over Temperature | Yes (de-rated and shutdown) |
| Cooling | Force Air Ventilation |
| Temperature Setting | High, Normal, Low (no battery temp. sensor connected) |
| Battery Temperature Sensor Port | RJ12 (optional Battery Temperature Sensor use) |
| Digital Display Port | RJ12 (Digital Display use) |

Display Panel

| | |
|-----------------|--|
| Digital Display | LED display with back lighting (Voltage, Current, Status, Error Code) |
|-----------------|--|

Display

| | |
|----------------|--|
| LED Indicators | Flashing green LED: Charging in progress Solid green LED: Fully Charged Solid Red LED: Fault |
|----------------|--|

| | |
|---------------|--------|
| Communication | CANBUS |
|---------------|--------|

Enclosure

| | |
|----------------------|----------|
| DC Input Connection | Hardwire |
| DC Output Connection | Hardwire |

Size

| | |
|------------------------|---|
| Dimensions (L x W x H) | 17.9" x 9.4" x 4.1" (455mm x 238mm x 104mm) |
| Net Weight | 7.6 lbs. / 3.45 Kg |

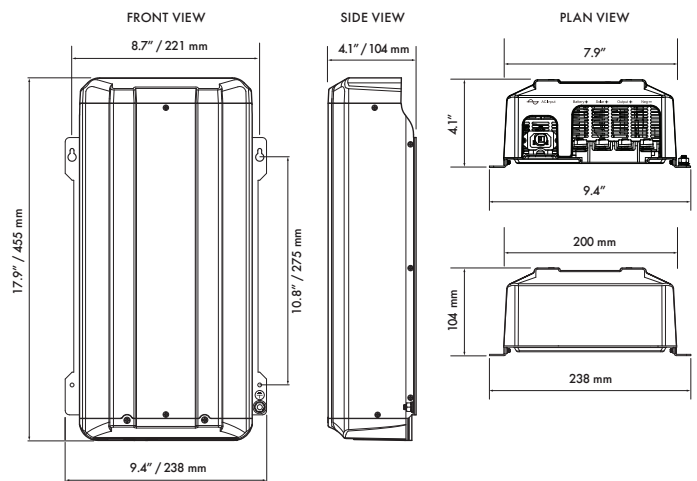
Accessories (optional)

| | |
|----------------------------|---|
| Battery Temperature Sensor | BTS 10K (For battery charging voltage adjustment) |
|----------------------------|---|

Regulatory Compliance

| | | |
|-------------|---------------------|--------|
| Markings | cETLus | CE |
| Conformance | UL & CSA Standards | CE LVD |
| EMI/EMC | FCC Part 15 Class B | CE EMC |

Schematic Drawings



Standard warranty

2 year warranty



This product carries a cETLus safety certification which complies with the Regulatory safety standards for North America.



Certified to meet all CE Regulatory approval standards in Europe.

All specifications subject to change without notice.
Copyright © 2022 Kisae Technology Inc. All Rights Reserved under UCC 1-308 without prejudice.

To learn more about this and other fine Kisae products please contact:
info@kisaetechnology.com

kisae.power.com

Distributor: